



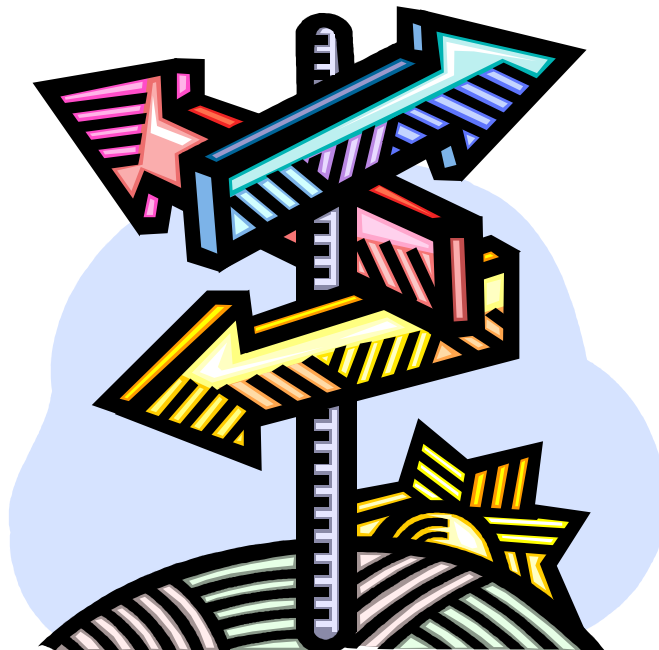
# ALABARÉ CHRISTIAN CARE CENTRES

## Barnabas House

37 Castle Road  
Salisbury  
Wiltshire  
SP1 3RH

Tel: 01722 421340

## SUPPORTED HOUSING PROJECT



**Head Office: 33 Brown Street, Salisbury, SP1 2AS. 01722 322882**

**Alabare Christian Care Centres is a company limited by guarantee  
Registered in England No 2604011 Registered Charity No 1006504**

## **Introduction**

Barnabas House is a supported housing project for vulnerable women. We provide medium/high to intensive support for up to 9 women who have a variety of complex needs. All clients are allocated their own key worker who works closely with them devising an agreed support plan based on their individual needs, we are able to signpost to external agencies if required, offer support from our mental health worker and provide budgeting and life skills training. The large semi-detached house is situated close to the city centre and offers a safe and homely environment with 24 hour staffing.

Our overall mission is to provide accommodation for 9 women with medium to intensive support needs in a supportive, stimulating and safe environment enabling them to make life changes and develop so that they are able to move on into successful independent living.

We endeavour to hold activity sessions within the house these vary from beauty nights, card making, jewellery making, bingo, quiz nights etc. All activities are based on service user requirements and requests.

We do have house rules at Barnabas a necessity in shared housing, however, most of the house rules have been set by service users themselves and are reviewed regularly. All service users will be expected to carry out a daily job which is based on a rota system and we do not allow alcohol or drugs on the premises.

### **Outcomes for the service users are:-**

1. To enable service users to have the skills and confidence to move on into independent accommodation within 2 years
2. Enabling service users to build constructive and positive relationships within the community.
3. To encourage an awareness of personal responsibility around safety and security.

4. To enable service users to enjoy, identify and pursue their aspirations through training, education, employment and hobbies thus increasing their confidence and self worth.
5. To increase awareness around physical and mental wellbeing and enable service users to access health services.

### **The objectives for the project are:-**

1. Provide safe accommodation to level B standards or above in the SP QAF reviews.
2. Provide support through enthusiastic, motivated and well trained staff with consistent and specific key working sessions aimed at addressing identified needs.
3. Good working relationships with outside agencies and established protocols and links with named staff.
4. We will provide Outcome Star Monitoring and “It’s Your Move” tenancy training.
5. Provide a service which is service user led encouraging evaluation, comment and responsibility within the project. We will monitor, evaluate and review the service via feedback and seek to continuously improve.

### **Entry Criteria**

Potential service users must fulfil the following criteria:-

- Female
- Have support needs
- Over 16 years of age
- In receipt of benefits
- Homeless
- Willing to access the support on offer
- Due to the client group and health & safety reasons we are unable to offer accommodation to children

We realise that for many service users it can be difficult to recognise housing related needs. Alabaré Christian Care Centres take a holistic view of need and as such are able to provide services to service users in need of housing management support (e.g. health and safety, maintenance, benefit applications etc) and to those who need

temporary respite whilst recovering from traumatic life events (e.g. unemployment, abuse, family breakdown, bereavement etc).

## **Referral Process**

We are not a direct access project. Our interview process is aimed at establishing whether potential service users are likely to benefit from our services and will involve us taking up references in conjunction with an agency risk assessment. If you wish to make a referral to Barnabas House please contact us, Monday–Friday between 9.00am and 5.00pm, to make an appointment for an interview. We usually hold interviews between the hours of 10.00am and 3.00pm Monday to Friday. We are unable to deal with referrals outside of these hours. You will be asked to complete a short risk assessment and provide us with contact details of any other involved agencies that might be able to provide us with supporting evidence. We require two (2) references to contact, via telephone, to verify information provided at interview. If all the necessary information is available prior to interview it may be possible to offer accommodation immediately, if no further issues arise at the interview. If we do not have enough information available at interview to do an adequate need and risk assessment it may take a further 2 working days or longer to make a decision. If the client has any communication needs please inform us at the initial inquiry stage. Acceptance for entry is at the discretion of the Staff Team and Management based on the support needs and the risk factors identified from information gained.

## **Offer of Accommodation**

If an offer of support and accommodation is made, both the referring agency and potential service user will be notified by letter. This will be for an initial 28 day assessment period. During this time the service user will be allocated a Key worker who will support the user to draw up a Support Plan based on needs identified by our Needs Assessment. The aim is to establish what goals the client hopes to achieve

whilst at Barnabas House, the steps identified to achieve these goals and who “will do what by when”. In certain circumstances conditions may be applied to acceptance in order to focus client on specific issues. After the assessment a decision will be made based on identified needs, access to the support offered and suitability of the service user, both referring agency and service user will be notified by letter. It is very rare for us not to offer a full licence and support agreement.

The current accommodation charge is £103.60. Support charges are met from the Supporting People Fund and are not means tested. All residents will be required to make a personal contribution to their rent without exception. For those in receipt of full housing benefit this is currently £13.80. This represents the ineligible portion of the accommodation charge as per benefit regulations and includes personal light and heat, water etc. We do not exclude women who work; however, they need to be made aware that they will not be eligible to full housing benefit. We require a £10 deposit on entry this is to cover the cost of the keys issued, this deposit will be refunded on leaving provided the original keys are returned.

It is most important that all prospective and current service users are aware of, and agree to, both, pay their personal contribution and work with their Key worker on their Support Plans, as these are conditions of the issue of the licence agreement. All service users in receipt of benefits and/or wages who do not pay their contribution for 4 weeks or more and who do not maintain any obligations in any subsequent accommodation charge arrears agreements will be at risk of Alabaré terminating the Licence Agreement. Any resident who consistently refuses to engage in support will also jeopardize their Licence Agreement.

We respectfully request that potential service users who clearly are outside of our eligibility criteria are not referred to us. In order to ensure that we provide a consistently high standard of service provision, we are unable to make exceptions to any of these above policies.

Please do contact us to discuss any queries you may have. If Barnabas House is unable to provide a service to your client, another of Alabaré's services may be able to help. Failing this we will endeavour to provide you with the contact details of other organisations that may meet your clients' needs.